















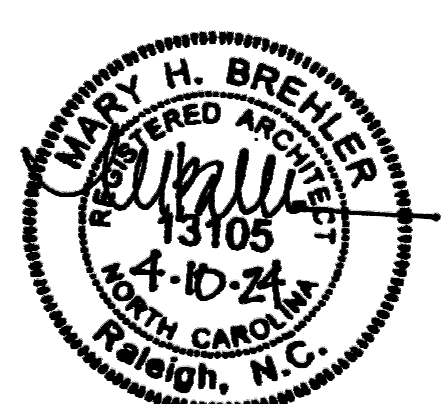
DEMOLITION NOTES BY NUMBER	
NUMBER	NOTE
1	EXISTING TWO STORY CLASSROOM BUILDING TO BE DEMOLISHED, INCLUDING, BUT NOT LIMITED TO, ALL UTILITY CONNECTIONS, SERVICES, FOUNDATIONS, AND ARCHITECTURAL COMPONENTS.
2	EXISTING ONE STORY KINDERGARTEN CLASSROOM BUILDING TO BE DEMOLISHED, INCLUDING, BUT NOT LIMITED TO, ALL UTILITY CONNECTIONS, SERVICES, FOUNDATIONS, AND ARCHITECTURAL COMPONENTS.
3	EXISTING TWO STORY GYMNASIUM BUILDING TO BE DEMOLISHED, INCLUDING, BUT NOT LIMITED TO, ALL UTILITY CONNECTIONS, SERVICES, FOUNDATIONS, AND ARCHITECTURAL COMPONENTS.
4	1,300 SQUARE FEET OF EXISTING EXTERIOR BRICK TO BE SALVAGED FROM TWO STORY EXISTING 1950S GYMNASIUM BUILDING. AREAS OF SALVAGE TO BE SELECTED BY ARCHITECT. SALVAGED BRICK TO BE PLACED ON PALETTES AND WRAPPED AND RETURNED TO THE OWNER.
5	EXISTING MOBILE CLASSROOM BUILDING TO BE DEMOLISHED, INCLUDING, BUT NOT LIMITED TO, ALL UTILITY CONNECTIONS, SERVICES, FOUNDATIONS, AND ARCHITECTURAL COMPONENTS.
6	EXISTING BRICK SHED BUILDING TO BE DEMOLISHED, INCLUDING, BUT NOT LIMITED TO, ALL UTILITY CONNECTIONS, SERVICES, FOUNDATIONS, AND ARCHITECTURAL COMPONENTS.



Wake County  
Public School  
System



434 FAYETTEVILLE STREET SUITE 1700  
RALEIGH, NORTH CAROLINA 27601  
TEL. 919.829.2700 FAX. 919.829.2730  
WWW.LS3P.COM

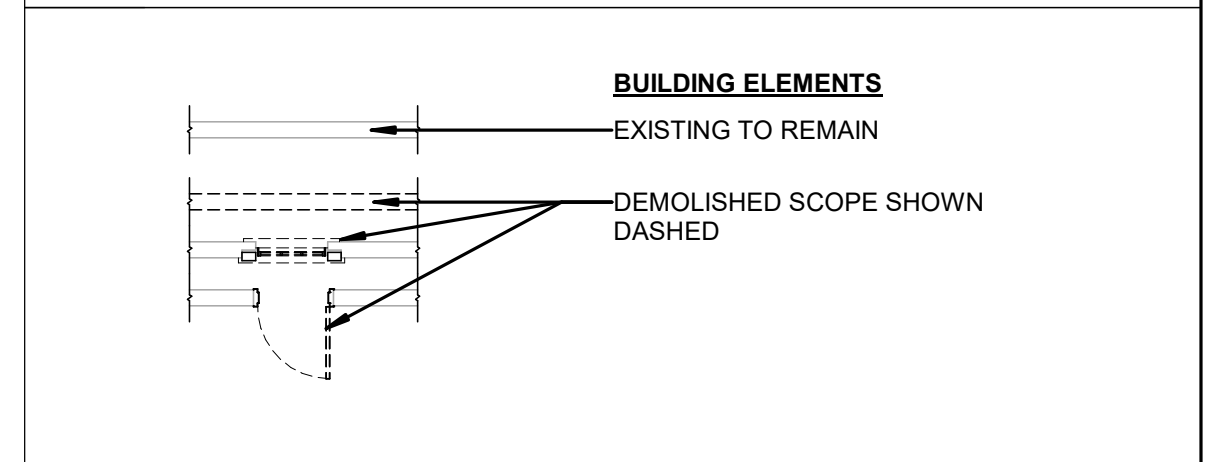


COPYRIGHT 2024 ALL RIGHTS RESERVED. PRINTED OR ELECTRONIC DRAWINGS AND DOCUMENTATION MAY NOT BE REPRODUCED IN ANY FORM WITHOUT WRITTEN PERMISSION FROM LS3P ASSOCIATES, LTD.

**Swift Creek Elementary  
School**  
5601 Tryon Rd Raleigh, NC 27606

LS3P PROJECT: 9201-207411

**DEMOLITION GRAPHICS**



**DEMOLITION PLAN SHEET NOTES**

- SEE G00.02 FOR SHEET-SPECIFIC GRAPHICS & SYMBOLS.
- NUMBERED KEY NOTES DO NOT IMPLY SEQUENCE. CONTRACTOR TO PERFORM DEMOLITION WORK AS REQUIRED PER WORK SEQUENCE.
- DEMOLITION DRAWINGS ARE INTENDED TO SHOW GENERAL AREAS OF DEMOLITION AS WELL AS GENERAL EXISTING CONDITIONS. THEY DO NOT SHOW ALL WORK WHICH MAY BE NECESSARY. COMPARE WITH DRAWINGS INDICATING NEW CONSTRUCTION.
- REFER TO OTHER DRAWINGS AND SPECIFICATIONS FOR ADDITIONAL INFORMATION OR DEMOLITION. REFER TO MECHANICAL, ELECTRICAL, AND PLUMBING DEMOLITION DRAWINGS FOR ADDITIONAL INFORMATION.
- EXISTING WORK TO REMAIN SHALL BE TEMPORARILY SECURED, BRACED, STABILIZED AND PROTECTED UNTIL PERMANENT CONSTRUCTION IS IN PLACE.
- THE CONTRACTOR MUST MAINTAIN ADEQUATE SUPPORT FOR INSULATION, WATERPROOFING, EMERGENCY LIGHTING, SECURITY, ALARMS, ETC. FOR ALL OR PART OF ITEMS WHICH ARE TO REMAIN.
- VERIFY FIELD CONDITIONS PRIOR TO START OF DEMOLITION/CONSTRUCTION AND NOTIFY THE ARCHITECT OF ANY DISCREPANCIES.
- VERIFY THAT CONSTRUCTION INDICATED FOR REMOVAL IS NOT LOAD BEARING OR IS ADEQUATELY SHORED AS INDICATED ON STRUCTURAL DRAWINGS PRIOR TO STARTING ANY WORK.
- ERECT BARRICADES, FENCES OR OTHER SECURABLE MEANS TO PREVENT UNAUTHORIZED ACCESS INTO CONSTRUCTION ZONES.
- DO NOT ALLOW MATERIAL AND DEBRIS GENERATED BY DEMOLITION ACTIVITIES TO ACCUMULATE ON THE JOB SITE. REMOVE DAILY AND DISPOSE OF IN A LEGAL MANNER. NO ON-SITE SALE OR BURNING OF REMOVED ITEMS IS PERMITTED.
- TERMINATE AND CAP UTILITIES IN WALLS, CEILINGS, AND FLOORS, NOTED TO BE REMOVED AND NOT INTENDED FOR REUSE.
- PREPARE AND PATCH SURFACES THAT ARE TO RECEIVE NEW FINISHES REQUIRED AFTER REMOVING OR RELOCATING DEVICES, WIRING OR OTHER APPLIANCES. REFER TO FINISH SCHEDULE FOR NEW FINISHES.
- MAINTAIN EXISTING FINISHES, OPERATIONAL CHARACTERISTICS, AND APPEARANCE OF ITEMS SCHEDULED TO REMAIN OR BE REUSED.
- IN THE EVENT THAT ANY PARTY ENCOUNTERS SUSPECTED ASBESTOS, HAZARDOUS OR OTHER TOXIC MATERIAL AT THE JOB SITE, OR SHOULD IT BECOME KNOWN THAT SUCH MATERIAL MAY BE PRESENT AT THE JOB SITE, CONTRACTOR SHALL NOTIFY THE OWNER AND THE ARCHITECT IMMEDIATELY IN WRITING.

**SHEET NAME:**  
DEMOLITION  
FLOOR PLAN-  
LEVEL 1

**BID SET SUBMISSION:** 2024.04.10

**SHEET:**  
AD01.01

**A1 DEMOLITION PLAN- LEVEL 1**  
1/16" = 1'-0"





















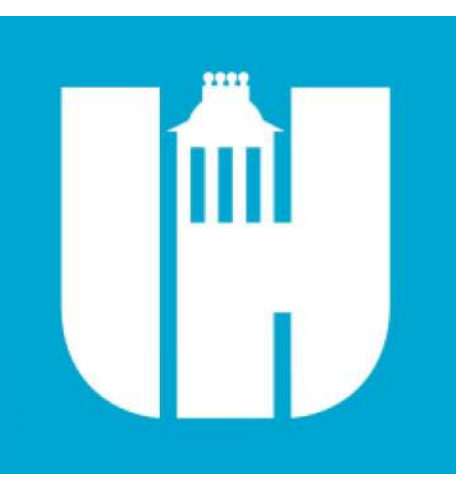












Wake County Public School System



434 FAYETTEVILLE STREET SUITE 1700  
RALEIGH, NORTH CAROLINA 27601  
TEL. 919.829.2700 FAX. 919.829.2730  
WWW.LS3P.COM



*Vu The Nguyen*  
4.4.2024

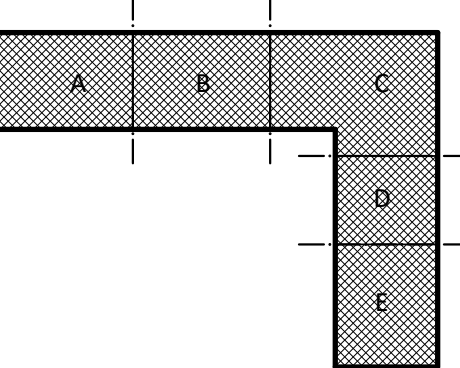
COPYRIGHT 2024. ALL RIGHTS RESERVED. PRINTED OR ELECTRONIC DRAWINGS AND DOCUMENTATION MAY NOT BE REPRODUCED IN ANY FORM WITHOUT WRITTEN PERMISSION FROM LS3P ASSOCIATES LTD.

Swift Creek Elementary School  
5601 Tryon Rd Raleigh, NC 27606

LS3P PROJECT: 9201-207411

DATE	DESCRIPTION
10/17/2023	100%
4/10/2024	BID SET

KEY PLAN:



SHEET NAME:  
ROOF PLAN-OVERALL

BID SET SUBMISSION: 2024.04.10

SHEET: A01.03

BID SET

THE LINE DRAWING IS EXACTLY THE SAME AS THE PAPER PRINT

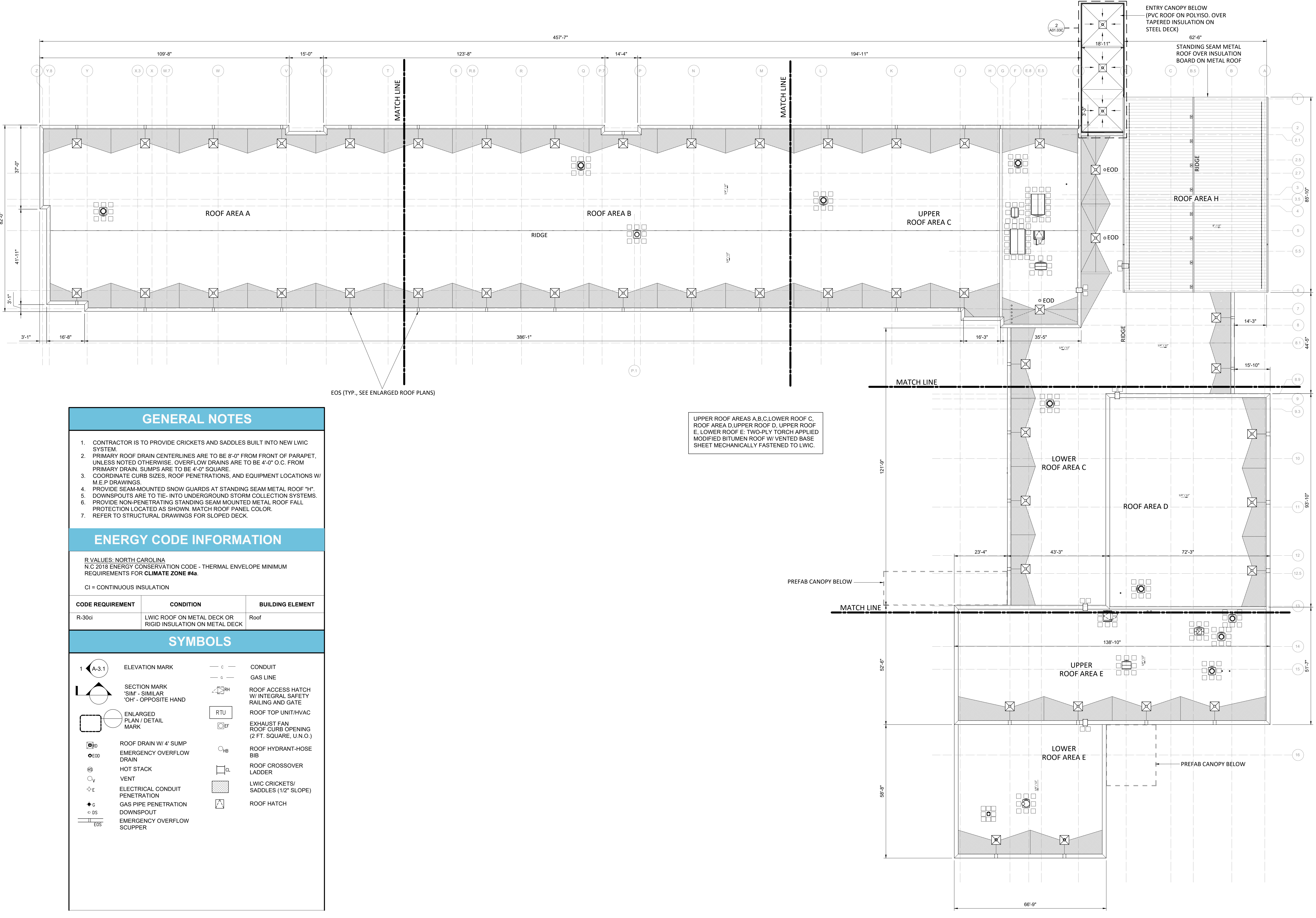
E

D

C

B

A



UPPER ROOF AREAS A,B,C, LOWER ROOF C, ROOF AREA D, UPPER ROOF D, UPPER ROOF E, LOWER ROOF E: TWO-PLY TORCH APPLIED MODIFIED BITUMEN ROOF W/ VENTED BASE SHEET MECHANICALLY FASTENED TO LWIC.

NOTE: DIMENSIONS ARE APPROXIMATE.

### GENERAL NOTES

- CONTRACTOR IS TO PROVIDE CRICKETS AND SADDLES BUILT INTO NEW LWIC SYSTEM.
- PRIMARY ROOF DRAIN CENTERLINES ARE TO BE 8'-0" FROM FRONT OF PARAPET, UNLESS NOTED OTHERWISE. OVERFLOW DRAINS ARE TO BE 4'-0" O.C. FROM PRIMARY DRAIN. SUMPS ARE TO BE 4'-0" SQUARE.
- COORDINATE CURB SIZES, ROOF PENETRATIONS, AND EQUIPMENT LOCATIONS W/ M.E.P. DRAWINGS.
- PROVIDE SEAM-MOUNTED SNOW GUARDS AT STANDING SEAM METAL ROOF "H".
- DOWNSPOUTS ARE TO TIE- INTO UNDERGROUND STORM COLLECTION SYSTEMS.
- PROVIDE NON-PENETRATING STANDING SEAM MOUNTED METAL ROOF FALL PROTECTION LOCATED AS SHOWN. MATCH ROOF PANEL COLOR.
- REFER TO STRUCTURAL DRAWINGS FOR SLOPED DECK.

### ENERGY CODE INFORMATION

R VALUES: NORTH CAROLINA  
N.C 2018 ENERGY CONSERVATION CODE - THERMAL ENVELOPE MINIMUM REQUIREMENTS FOR CLIMATE ZONE #4a.

CODE REQUIREMENT	CONDITION	BUILDING ELEMENT
R-30ci	LWIC ROOF ON METAL DECK OR RIGID INSULATION ON METAL DECK	Roof

### SYMBOLS

	ELEVATION MARK		CONDUIT
	SECTION MARK 'SIM' - SIMILAR 'OH' - OPPOSITE HAND		GAS LINE
	ENLARGED PLAN / DETAIL MARK		ROOF ACCESS HATCH W/ INTEGRAL SAFETY RAILING AND GATE
	ROOF DRAIN W/ 4" SUMP		ROOF TOP UNIT/HVAC
	EMERGENCY OVERFLOW DRAIN		EXHAUST FAN ROOF CURB OPENING (2 FT. SQUARE, U.N.O.)
	HOT STACK		ROOF HYDRANT-HOSE BIB
	VENT		ROOF CROSSOVER LADDER
	ELECTRICAL CONDUIT PENETRATION		LWIC CRICKETS/ SADDLES (1/2" SLOPE)
	GAS PIPE PENETRATION		ROOF HATCH
	DOWNSPOUT		
	EMERGENCY OVERFLOW SCUPPER		

A1 OVERALL ROOF PLAN

1/16" = 1'-0"

1

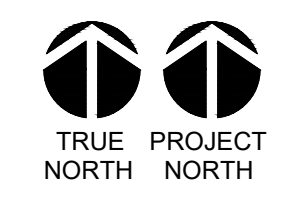
2

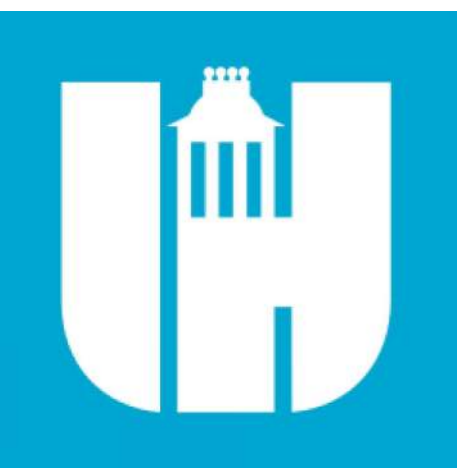
3

4

5

6





Wake County Public School System



434 FAYETTEVILLE STREET SUITE 1700  
RALEIGH, NORTH CAROLINA 27601  
TEL. 919.829.2700 FAX. 919.829.2730  
WWW.LS3P.COM



*Vu The Nguyen*  
4.4.2024

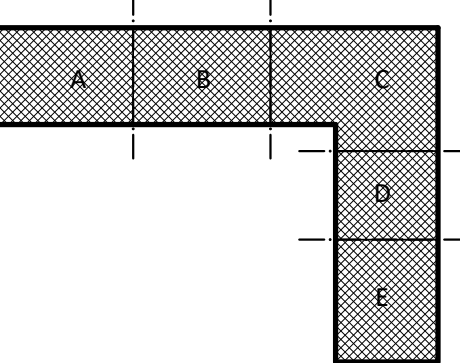
COPYRIGHT 2024. ALL RIGHTS RESERVED. PRINTED OR ELECTRONIC DRAWINGS AND DOCUMENTATION MAY NOT BE REPRODUCED IN ANY FORM WITHOUT WRITTEN PERMISSION FROM LS3P ASSOCIATES LTD.

Swift Creek Elementary School  
5601 Tryon Rd Raleigh, NC 27606

LS3P PROJECT: 6201-207411

DATE	DESCRIPTION
10/17/2023	100%
4/10/2024	BID SET

KEY PLAN:



SHEET NAME:  
WIND ZONE PLAN

BID SET SUBMISSION: 2024.04.10

SHEET:  
A01.03.1

BID SET

THE LINE DRAWING IS EXACTLY DIMENSIONED TO THE DIMENSIONS SHOWN ON THE DRAWING.

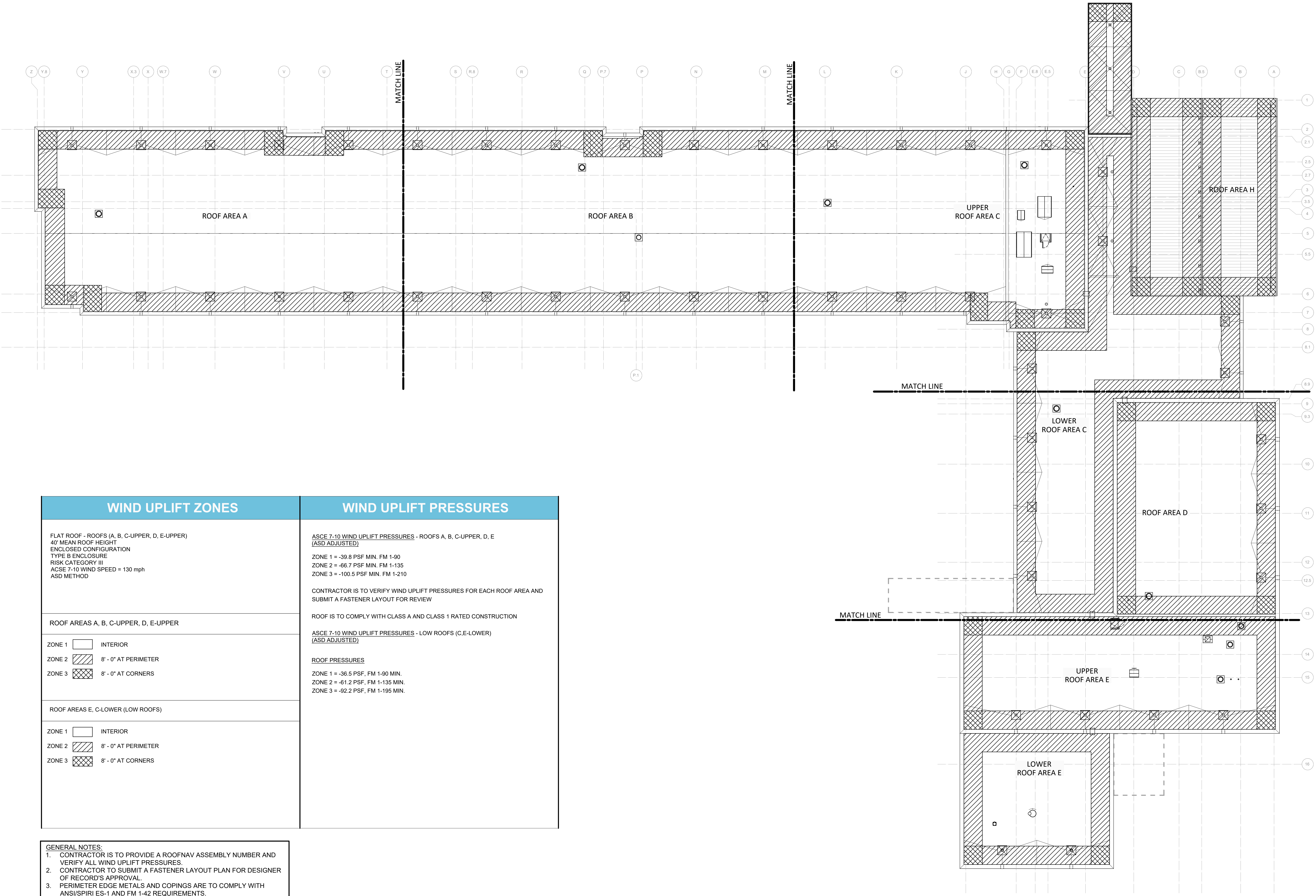
E

D

C

B

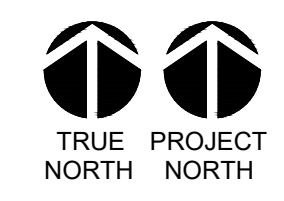
A



WIND UPLIFT ZONES	WIND UPLIFT PRESSURES
FLAT ROOF - ROOFS (A, B, C-UPPER, D, E-UPPER) 40' MEAN ROOF HEIGHT ENCLOSED CONFIGURATION TYPE B ENCLOSURE RISK CATEGORY III ACSE 7-10 WIND SPEED = 130 mph ASD METHOD	ASCE 7-10 WIND UPLIFT PRESSURES - ROOFS A, B, C-UPPER, D, E (ASD ADJUSTED) ZONE 1 = -39.8 PSF MIN. FM 1-90 ZONE 2 = -66.7 PSF MIN. FM 1-135 ZONE 3 = -100.5 PSF MIN. FM 1-210  CONTRACTOR IS TO VERIFY WIND UPLIFT PRESSURES FOR EACH ROOF AREA AND SUBMIT A FASTENER LAYOUT FOR REVIEW  ROOF IS TO COMPLY WITH CLASS A AND CLASS 1 RATED CONSTRUCTION  ASCE 7-10 WIND UPLIFT PRESSURES - LOW ROOFS (C,E-LOWER) (ASD ADJUSTED)  ROOF PRESSURES ZONE 1 = -36.5 PSF, FM 1-90 MIN. ZONE 2 = -61.2 PSF, FM 1-135 MIN. ZONE 3 = -92.2 PSF, FM 1-195 MIN.
ROOF AREAS A, B, C-UPPER, D, E-UPPER  ZONE 1  INTERIOR ZONE 2  8' - 0" AT PERIMETER ZONE 3  8' - 0" AT CORNERS	
ROOF AREAS E, C-LOWER (LOW ROOFS)  ZONE 1  INTERIOR ZONE 2  8' - 0" AT PERIMETER ZONE 3  8' - 0" AT CORNERS	

- GENERAL NOTES:
- CONTRACTOR IS TO PROVIDE A ROOFNAV ASSEMBLY NUMBER AND VERIFY ALL WIND UPLIFT PRESSURES.
  - CONTRACTOR TO SUBMIT A FASTENER LAYOUT PLAN FOR DESIGNER OF RECORD'S APPROVAL.
  - PERIMETER EDGE METALS AND COPINGS ARE TO COMPLY WITH ANSI/SPIRI ES-1 AND FM 1-42 REQUIREMENTS.
  - ROOF MOUNTED EQUIPMENT (HVAC UNITS/EXHAUST FANS/ETC.) ARE TO COMPLY WITH FM 1-28 REQUIREMENTS.
  - MOD-BIT ROOF SYSTEMS ARE TO RECEIVE A 20 YR. NDL WARRANTY FOR MATERIALS AND INSTALLATION. STANDING SEAM ROOFS ARE TO RECEIVE A 30 YR. NDL WARRANTY FOR MATERIALS AND INSTALLATION.

A1 WIND ZONE PLAN  
1/16" = 1'-0"



1 2 3 4 5 6

THE LINE SHOWN ABOVE IS EXACTLY  
THE LOCATION OF THE ROOF LINE  
FOR THE ABOVE ROOF AREA.

E

D

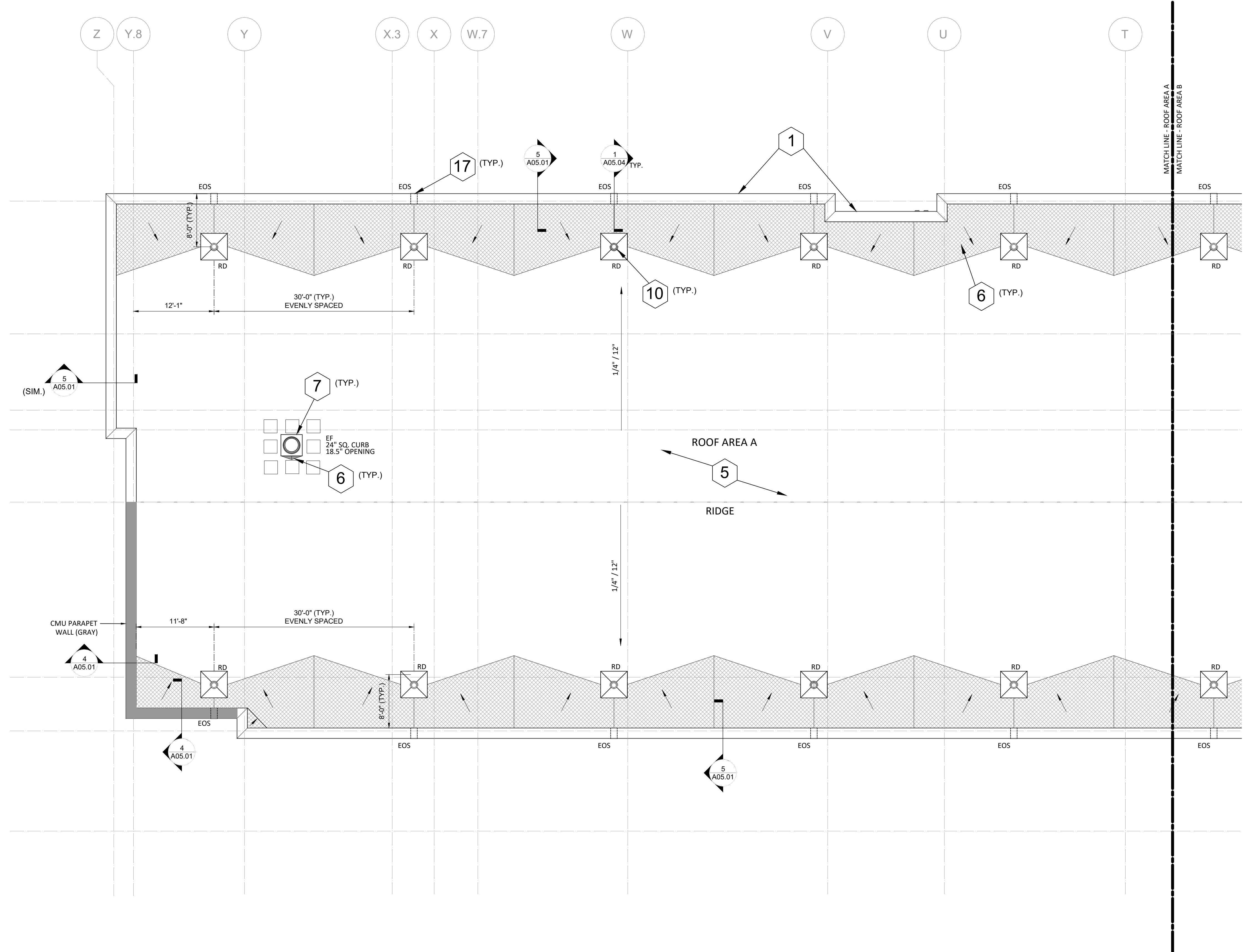
C

B

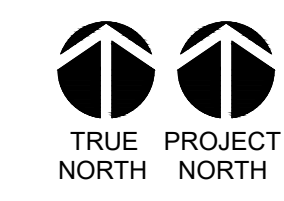
A

- 17 OVERFLOW SCUPPER SCHEDULE: (SEE DETAILS 1.2,3/A05.04)**
- 4" X 12" = NORTH AND SOUTH ROOF AREAS - UPPER A/B/C & LOWER WEST SIDE - ROOF AREA C.
  - 4" X 16" = LOWER ROOF AREA C, UPPER & LOWER ROOF AREA E.
  - 4" X 20" = ROOF AREA D.

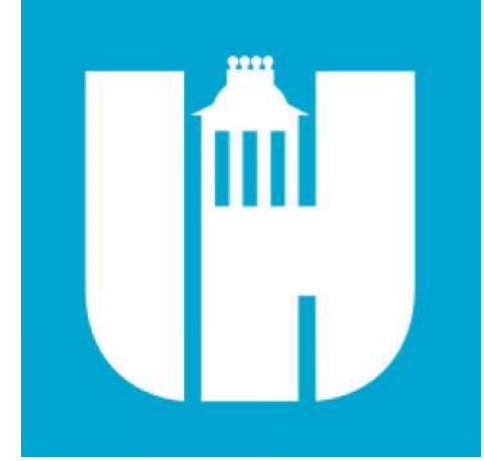
ROOF PLAN KEYNOTES	
NUMBER	NOTE
①	PREFINISHED 0.050" ALUMINUM COPING - SEE DETAILS 4, 5/A05.01.
②	WALL-MOUNTED ROOF ACCESS LADDER.
③	2" EXPANSION JOINT - SEE DETAILS 6,7/A05.04.
④	WALKWAY PADS.
⑤	MODIFIED BITUMEN ROOF SYSTEM OVER LWIC DECK. DECK IS STRUCTURALLY SLOPED EXCEPT @ ENTRANCE CANOPY.
⑥	LWIC CRICKET/SADDLE (SHADED) AT 1/2" SLOPE.
⑦	HVAC EQUIPMENT/EXHAUST FAN CURB - SEE DETAIL 2/A05.02.
⑧	6" W X 5" DP. GUTTER WITH 4" X 3" RECTANGULAR DOWNSPOUT. TIE DOWNSPOUTS INTO UNDERGROUND STORMWATER COLLECTION SYSTEM ON WEST SIDE OF S.S. ROOF AND EMPTY ONTO SPLASHBLOCKS ON THE EAST SIDE OF S.S. ROOF - SEE DETAIL 1/A05.03.
⑨	OVERFLOW DRAIN - SEE DETAIL 6/A05.02.
⑩	ROOF DRAIN WITH 4-FT. SUMP - SEE DETAIL 5/A05.02.
⑪	ROOF HATCH WITH SPECIAL PAINT COATING AND INTEGRAL OSHA COMPLIANT SAFETY RAILING WITH SWING GATE - SEE DETAIL 3/A05.02.
⑫	PIPE PENETRATION - SEE DETAIL 4/A05.02.
⑬	SLEEPER/ROOF CURB (SIM.) - SEE DETAIL 5/A05.04.
⑭	SNOW GUARDS ON STANDING SEAM ROOF.
⑮	STANDING SEAM METAL ROOF SYSTEM.
⑯	RADON VENTS - SEE DETAIL 4/A05.02.
⑰	OVERFLOW SCUPPER - SEE SCHEDULE ON ENLARGED PLANS AND DETAILS 1-3/A05.04.



**1 ROOF PLAN- PARTIAL - AREA A**  
1/8" = 1'-0"



ROOF PLAN GENERAL NOTES	
1.	SEE A01.03 FOR SHEET SPECIFIC GRAPHICS & SYMBOLS.
2.	LOCATIONS AND SIZES OF MECHANICAL EQUIPMENT ARE APPROXIMATE. COORDINATE WITH STRUCTURAL, MECHANICAL PLANS AND EQUIPMENT SHOP DRAWINGS.
3.	SEE PLUMBING DRAWINGS FOR VENT LOCATIONS.
4.	SEE STRUCTURAL DRAWINGS FOR DESIGN LOAD REQUIREMENTS.
5.	ALL LOW SLOPED ROOFS TO BE MINIMUM 1/4" PER FOOT. ALL ROOF DRAINS TO BE INSTALLED IN 4'-0" X 4'-0" - SLOPED SUMP. TYPICAL.
6.	PROVIDE CRICKETS W/ 1/2" SLOPE AT UPSLOPE SIDE OF CURBS 24" WIDE OR GREATER. TYP.
7.	SLOPE ALL COPINGS BACK TO ROOF.
8.	WOOD BLOCKING SHOWN IN ROOF DETAILING SHALL BE FIRE TREATED. USE STAINLESS STEEL FASTENERS IN SPACING COMPLIANT W/ ANSI/SPIRI ES-1/FM 1-49 REQUIREMENTS.
9.	EXTEND ALL PENETRATIONS, CURBS, AND COMPONENTS A MINIMUM OF 8" ABOVE THE FINISHED ROOF SURFACE. PROVIDE 12" CLEAR HORIZONTAL DISTANCE BETWEEN PENETRATIONS AND ANY VERTICAL SURFACE.
10.	IF NOT DETAILED, APPLY MOST STRINGENT CONDITION OF NRCA AND SMACNA (CURRENT EDITIONS) STANDARDS FOR ROOF DETAIL CONDITIONS.
11.	PROVIDE PRIMA FLASHINGS AT SMALL DIAMETER AND/OR SQUARE ROOF PENETRATIONS.



Wake County  
Public School  
System



434 FAYETTEVILLE STREET SUITE 1700  
RALEIGH, NORTH CAROLINA 27601  
TEL. 919.829.2700 FAX. 919.829.2730  
WWW.LS3P.COM



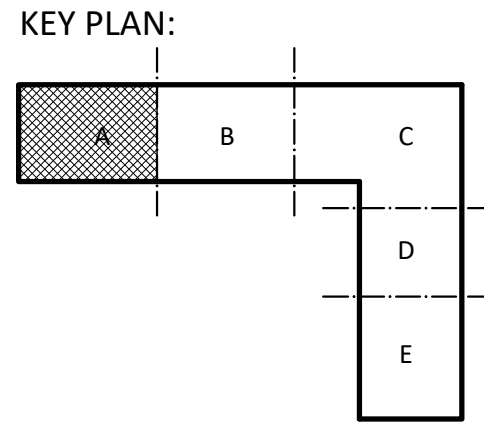
*Vu The Nguyen*  
4.4.2024

COPYRIGHT 2021. ALL RIGHTS RESERVED. PRINTED OR ELECTRONIC DRAWINGS AND DOCUMENTATION MAY NOT BE REPRODUCED IN ANY FORM WITHOUT WRITTEN PERMISSION FROM LS3P ASSOCIATES LTD.

**Swift Creek Elementary School**  
5601 Tryon Rd Raleigh, NC 27606

LS3P PROJECT: 6201-207411

DATE	DESCRIPTION
10/17/2023	100%
4/10/2024	BID SET



**SHEET NAME:**  
ROOF PLAN- AREA A

**BID SET SUBMISSION:** 2024.04.10

**SHEET:**  
**A01.03A**

BID SET

THE LINE SHOWN ABOVE IS EXACTLY  
ONE HALF INCH PER FOOT  
FOR ALL DIMENSIONS

E

D

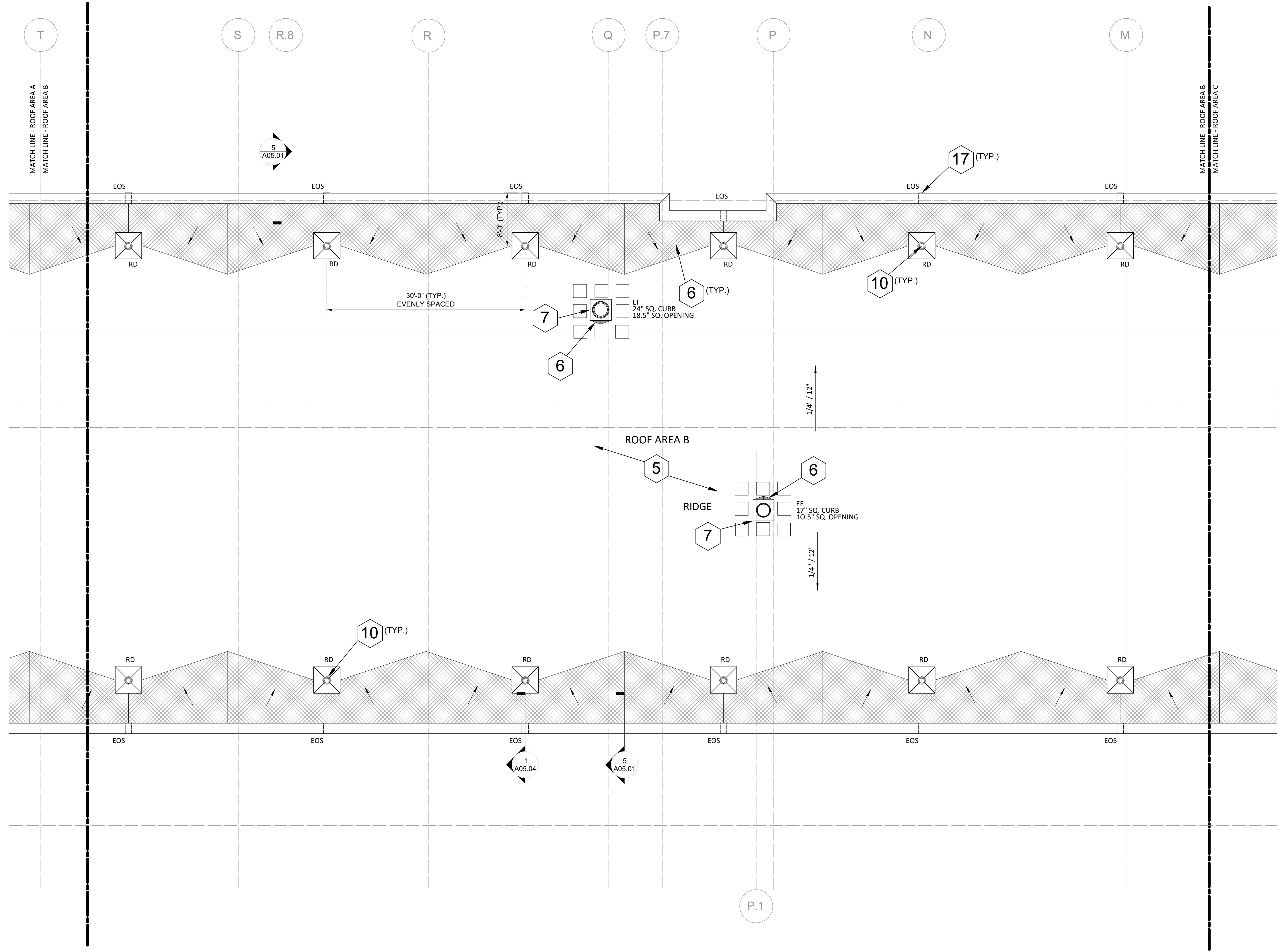
C

B

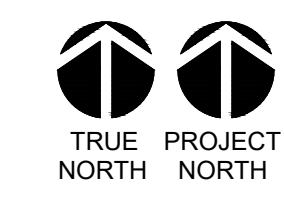
A

- 17 OVERFLOW SCUPPER SCHEDULE: (SEE DETAILS 1.2,3/A05.04)**
- 4" X 12" = NORTH AND SOUTH ROOF AREAS - UPPER A/B/C & LOWER WEST SIDE - ROOF AREA C.
  - 4" X 16" = LOWER ROOF AREA C, UPPER & LOWER ROOF AREA E.
  - 4" X 20" = ROOF AREA D.

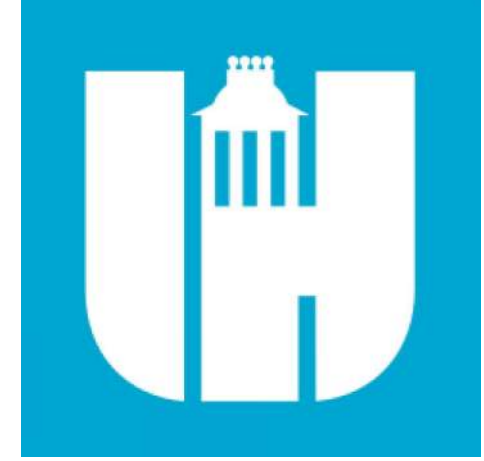
ROOF PLAN KEYNOTES	
NUMBER	NOTE
1	PREFINISHED 0.050" ALUMINUM COPING - SEE DETAILS 4.5/A05.01.
2	WALL-MOUNTED ROOF ACCESS LADDER.
3	2" EXPANSION JOINT - SEE DETAILS 6.7/A05.04.
4	WALKWAY PADS.
5	MODIFIED BITUMEN ROOF SYSTEM OVER LWIC DECK. DECK IS STRUCTURALLY SLOPED EXCEPT @ ENTRANCE CANOPY.
6	LWIC CRICKET/SADDLE (SHADED) AT 1/2":1' SLOPE.
7	HVAC EQUIPMENT/EXHAUST FAN CURB - SEE DETAIL 2/A05.02.
8	6" W X 5" DP. GUTTER WITH 4" X 3" RECTANGULAR DOWNSPOUT. TIE DOWNSPOUTS INTO UNDERGROUND STORMWATER COLLECTION SYSTEM ON WEST SIDE OF S.S. ROOF AND EMPTY ONTO SPLASHBLOCKS ON THE EAST SIDE OF S.S. ROOF - SEE DETAIL 1/A05.03.
9	OVERFLOW DRAIN - SEE DETAIL 6/A05.02.
10	ROOF DRAIN WITH 4-FT. SUMP - SEE DETAIL 5/A05.02.
11	ROOF HATCH WITH SPECIAL PAINT COATING AND INTEGRAL OSHA COMPLIANT SAFETY RAILING WITH SWING GATE - SEE DETAIL 3/A05.02.
12	PIPE PENETRATION - SEE DETAIL 4/A05.02.
13	SLEEPER/ROOF CURB (SIM.) - SEE DETAIL 5/A05.04.
14	SNOW GUARDS ON STANDING SEAM ROOF.
15	STANDING SEAM METAL ROOF SYSTEM.
16	RADON VENTS - SEE DETAIL 4/A05.02.
17	OVERFLOW SCUPPER - SEE SCHEDULE ON ENLARGED PLANS AND DETAILS 1-3/A05.04.



**1 ROOF PLAN- PARTIAL - AREA B**  
1/8" = 1'-0"



- ROOF PLAN GENERAL NOTES**
- SEE A01.03 FOR SHEET SPECIFIC GRAPHICS & SYMBOLS.
  - LOCATIONS AND SIZES OF MECHANICAL EQUIPMENT ARE APPROXIMATE. COORDINATE WITH STRUCTURAL, MECHANICAL PLANS AND EQUIPMENT SHOP DRAWINGS.
  - SEE PLUMBING DRAWINGS FOR VENT LOCATIONS.
  - SEE STRUCTURAL DRAWINGS FOR DESIGN LOAD REQUIREMENTS.
  - ALL LOW SLOPED ROOFS TO BE MINIMUM 1/4" PER FOOT. ALL ROOF DRAINS TO BE INSTALLED IN 4'-0" X 4'-0" - SLOPED SUMP. TYPICAL.
  - PROVIDE CRICKETS W/ 1/2" SLOPE AT UPSLOPE SIDE OF CURBS 24" WIDE OR GREATER. TYP.
  - SLOPE ALL COPINGS BACK TO ROOF.
  - WOOD BLOCKING SHOWN IN ROOF DETAILING SHALL BE FIRE TREATED. USE STAINLESS STEEL FASTENERS IN SPACING COMPLIANT W/ ANSI/SPIRI ES-1/FM 1-49 REQUIREMENTS.
  - EXTEND ALL PENETRATIONS, CURBS, AND COMPONENTS A MINIMUM OF 8" ABOVE THE FINISHED ROOF SURFACE. PROVIDE 12" CLEAR HORIZONTAL DISTANCE BETWEEN PENETRATIONS AND ANY VERTICAL SURFACE.
  - IF NOT DETAILED, APPLY MOST STRINGENT CONDITION OF NRCA AND SMACNA (CURRENT EDITIONS) STANDARDS FOR ROOF DETAIL CONDITIONS.
  - PROVIDE PRIMA FLASHINGS AT SMALL DIAMETER AND/OR SQUARE ROOF PENETRATIONS.



Wake County  
Public School  
System



434 FAYETTEVILLE STREET SUITE 1700  
RALEIGH, NORTH CAROLINA 27601  
TEL. 919.829.2700 FAX. 919.829.2730  
WWW.LS3P.COM

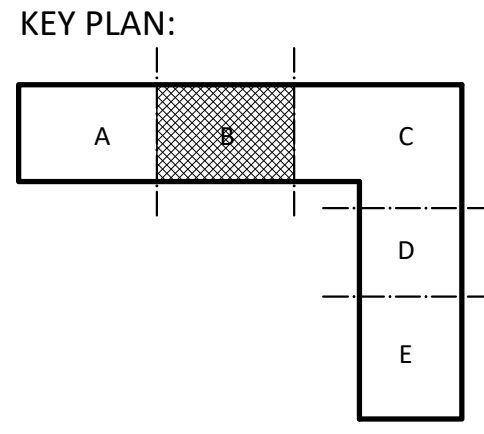


COPYRIGHT 2024. ALL RIGHTS RESERVED. PRINTED OR ELECTRONIC DRAWINGS AND DOCUMENTATION MAY NOT BE REPRODUCED IN ANY FORM WITHOUT WRITTEN PERMISSION FROM LS3P ASSOCIATES LTD.

**Swift Creek Elementary  
School**  
5601 Tryon Rd Raleigh, NC 27606

LS3P PROJECT: 6201-207411

DATE	DESCRIPTION
10/17/2023	100%
4/10/2024	BID SET



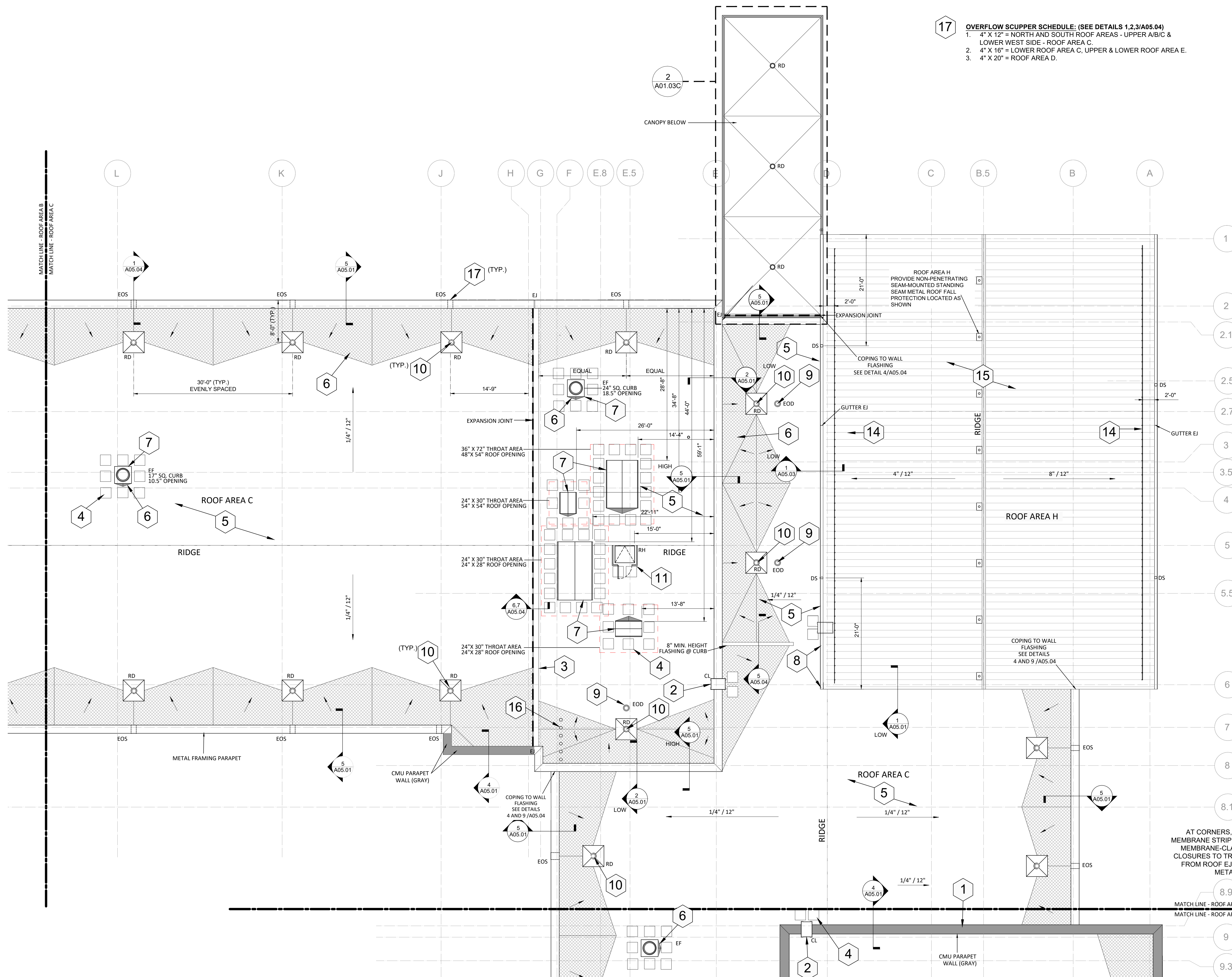
**SHEET NAME:**  
ROOF PLAN- AREA B

**BID SET SUBMISSION:** 2024.04.10

**SHEET:**  
**A01.03B**

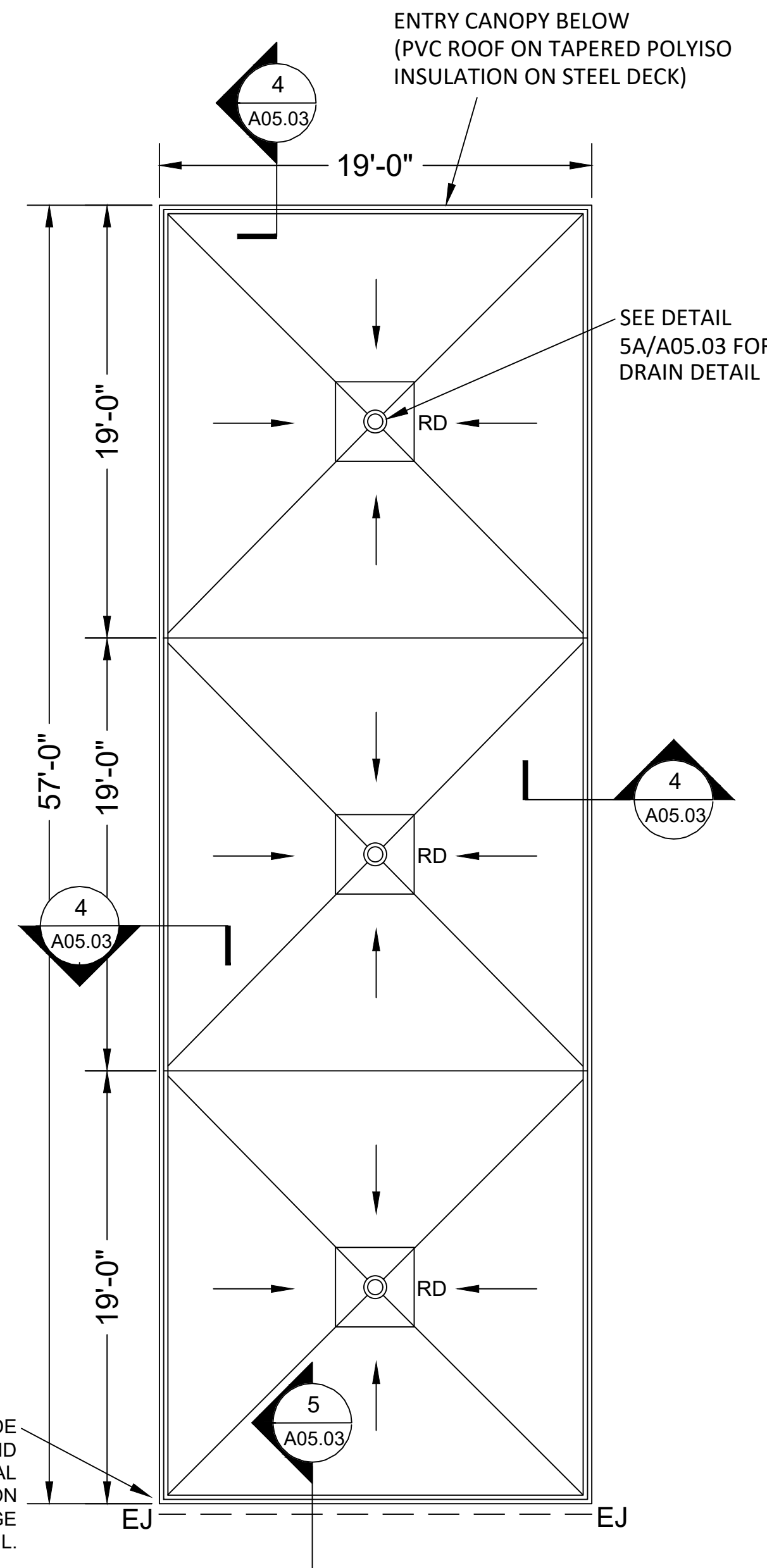
BID SET





**17 OVERFLOW SCUPPER SCHEDULE: (SEE DETAILS 1,2,3/A05.04)**  
 1. 4" X 12" = NORTH AND SOUTH ROOF AREAS - UPPER A/B/C & LOWER WEST SIDE - ROOF AREA C.  
 2. 4" X 16" = LOWER ROOF AREA C, UPPER & LOWER ROOF AREA E.  
 3. 4" X 20" = ROOF AREA D.

ROOF PLAN KEYNOTES	
NUMBER	NOTE
1	PREFINISHED 0.050" ALUMINUM COPING - SEE DETAILS 4, 5/A05.01.
2	WALL-MOUNTED ROOF ACCESS LADDER.
3	2" EXPANSION JOINT - SEE DETAILS 6,7/A05.04.
4	WALKWAY PADS.
5	MODIFIED BITUMEN ROOF SYSTEM OVER LWIC DECK. DECK IS STRUCTURALLY SLOPED EXCEPT @ ENTRANCE CANOPY.
6	LWIC CRICKET/SADDLE (SHADED) AT 1/2" SLOPE.
7	HVAC EQUIPMENT/EXHAUST FAN CURB - SEE DETAIL 2/A05.02.
8	6" W X 5" DP. GUTTER WITH 4" X 3" RECTANGULAR DOWNSPOUT. THE DOWNSPOUTS INTO UNDERGROUND STORMWATER COLLECTION SYSTEM ON WEST SIDE OF S.S. ROOF AND EMPTY ONTO SPLASHBLOCKS ON THE EAST SIDE OF S.S. ROOF - SEE DETAIL 1/A05.03.
9	OVERFLOW DRAIN - SEE DETAIL 6/A05.02.
10	ROOF DRAIN WITH 4-FT. SUMP - SEE DETAIL 5/A05.02.
11	ROOF HATCH WITH SPECIAL PAINT COATING AND INTEGRAL OSHA COMPLIANT SAFETY RAILING WITH SWING GATE - SEE DETAIL 3/A05.02.
12	PIPE PENETRATION - SEE DETAIL 4/A05.02.
13	SLEEPER/ROOF CURB (SIM.) - SEE DETAIL 5/A05.04.
14	SNOW GUARDS ON STANDING SEAM ROOF.
15	STANDING SEAM METAL ROOF SYSTEM.
16	RADON VENTS - SEE DETAIL 4/A05.02.
17	OVERFLOW SCUPPER - SEE SCHEDULE ON ENLARGED PLANS AND DETAILS 1-3/A05.04.

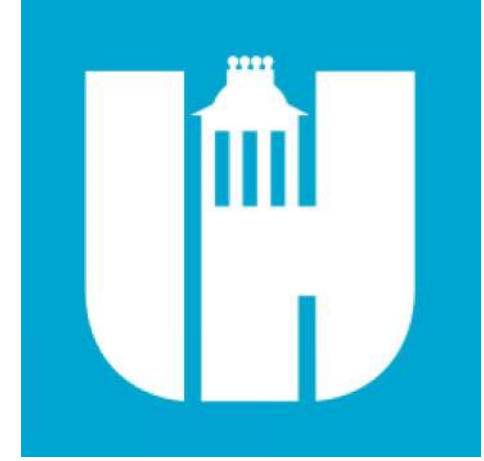
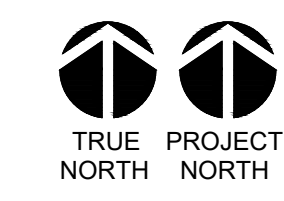


**2 ENTRY CANOPY**  
3/16" = 1'-0"

**ROOF PLAN GENERAL NOTES**

- SEE A01.03 FOR SHEET SPECIFIC GRAPHICS & SYMBOLS.
- LOCATIONS AND SIZES OF MECHANICAL EQUIPMENT ARE APPROXIMATE. COORDINATE WITH STRUCTURAL, MECHANICAL PLANS AND EQUIPMENT SHOP DRAWINGS.
- SEE PLUMBING DRAWINGS FOR VENT LOCATIONS.
- SEE STRUCTURAL DRAWINGS FOR DESIGN LOAD REQUIREMENTS.
- ALL LOW SLOPED ROOFS TO BE MINIMUM 1/4" PER FOOT. ALL ROOF DRAINS TO BE INSTALLED IN 4'-0" X 4'-0" SLOPED SUMP, TYPICAL.
- PROVIDE CRICKETS W/ 1/2" SLOPE AT UPSLOPE SIDE OF CURBS 24" WIDE OR GREATER, TYP.
- SLOPE ALL COPINGS BACK TO ROOF.
- WOOD BLOCKING SHOWN IN ROOF DETAILING SHALL BE FIRE TREATED. USE STAINLESS STEEL FASTENERS IN SPACING COMPLIANT W/ ANSI/SPIRI ES-1/FM 1-49 REQUIREMENTS.
- EXTEND ALL PENETRATIONS, CURBS, AND COMPONENTS A MINIMUM OF 8" ABOVE THE FINISHED ROOF SURFACE. PROVIDE 12" CLEAR HORIZONTAL DISTANCE BETWEEN PENETRATIONS AND ANY VERTICAL SURFACE.
- IF NOT DETAILED, APPLY MOST STRINGENT CONDITION OF NRCA AND SMACNA (CURRENT EDITIONS) STANDARDS FOR ROOF DETAIL CONDITIONS.
- PROVIDE PRIMA FLASHINGS AT SMALL DIAMETER AND/OR SQUARE ROOF PENETRATIONS.

**1 ROOF PLAN - PARTIAL - AREA 2**  
1/8" = 1'-0"



Wake County  
Public School  
System



434 FAYETTEVILLE STREET SUITE 1700  
RALEIGH, NORTH CAROLINA 27601  
TEL. 919.829.2700 FAX. 919.829.2730  
WWW.LS3P.COM

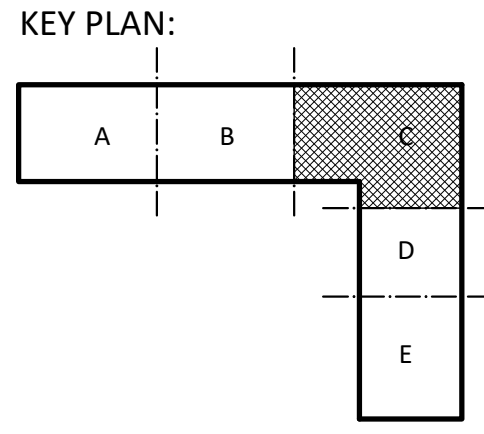


*Vu The Nguyen*  
4.4.2024

COPYRIGHT 2024. ALL RIGHTS RESERVED. PRINTED OR ELECTRONIC DRAWINGS AND DOCUMENTATION MAY NOT BE REPRODUCED IN ANY FORM WITHOUT WRITTEN PERMISSION FROM LS3P ASSOCIATES LTD.

**Swift Creek Elementary School**  
5601 Tryon Rd Raleigh, NC 27606  
LS3P PROJECT: 6201-207411

DATE	DESCRIPTION
10/17/2023	100%
4/10/2024	BID SET



**SHEET NAME:**  
ROOF PLAN - AREA C

**BID SET SUBMISSION:** 2024.04.10

**SHEET:**  
**A01.03C**

BID SET

THE LINE SHOWN ABOVE IS EXACTLY  
ONE HALF INCH PER FOOT  
FOR ALL DIMENSIONS UNLESS  
OTHERWISE NOTED

E

D

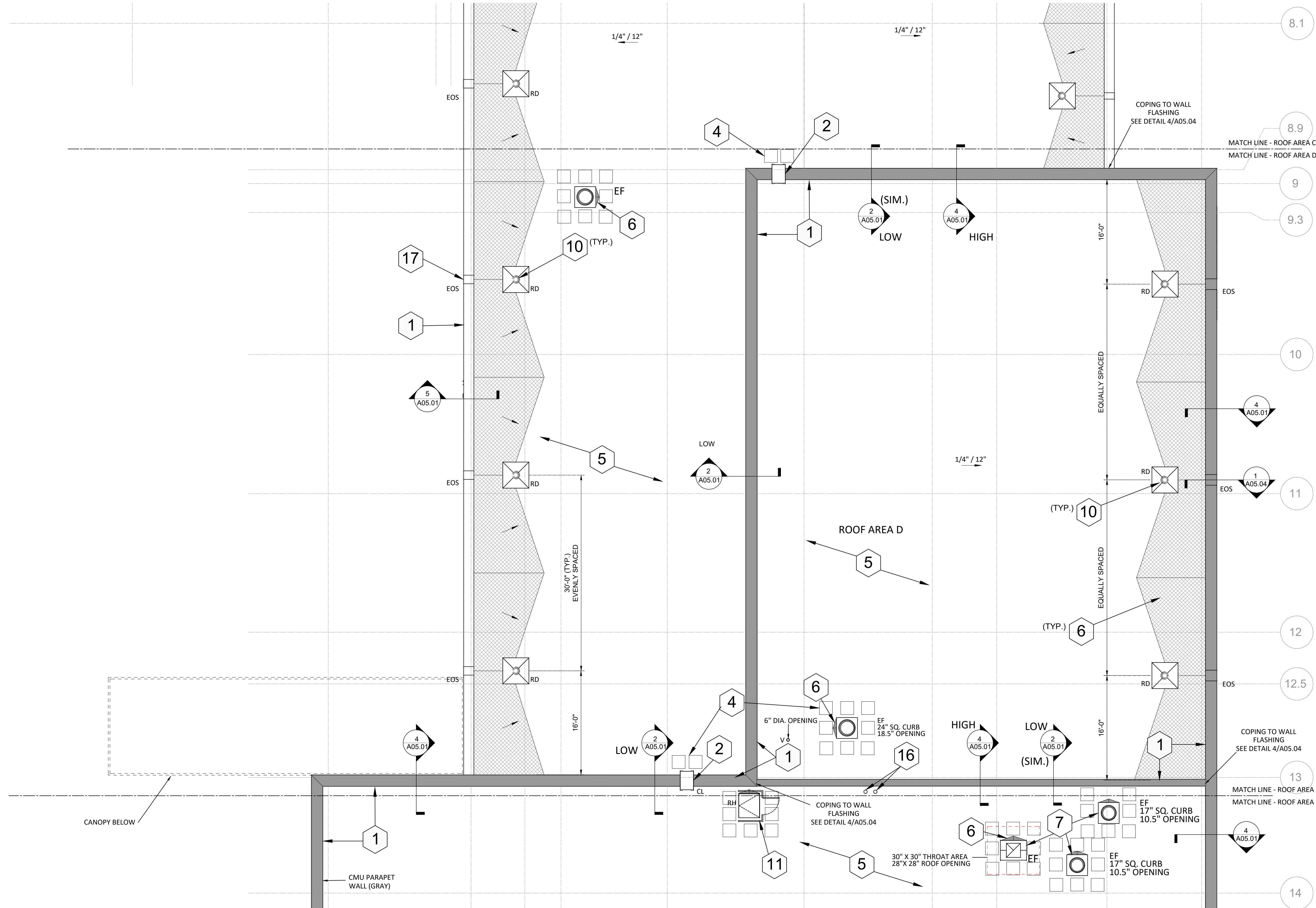
C

B

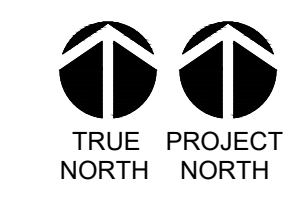
A

- 17 OVERFLOW SCUPPER SCHEDULE: (SEE DETAILS 1.2,3/A05.04)**
- 4" X 12" = NORTH AND SOUTH ROOF AREAS - UPPER A/B/C & LOWER WEST SIDE - ROOF AREA C.
  - 4" X 16" = LOWER ROOF AREA C, UPPER & LOWER ROOF AREA E.
  - 4" X 20" = ROOF AREA D.

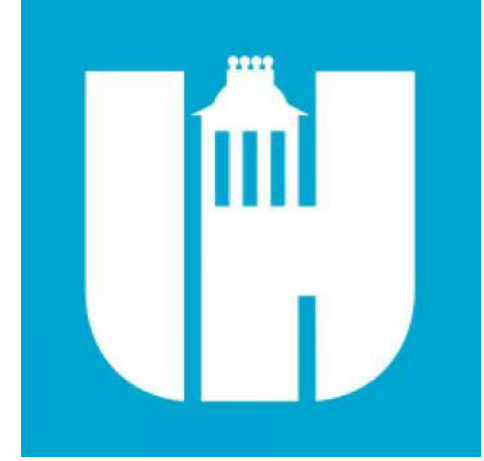
ROOF PLAN KEYNOTES	
NUMBER	NOTE
①	PREFINISHED 0.050" ALUMINUM COPING - SEE DETAILS 4, 5/A05.01.
②	WALL-MOUNTED ROOF ACCESS LADDER.
③	2" EXPANSION JOINT - SEE DETAILS 6.7/A05.04.
④	WALKWAY PADS.
⑤	MODIFIED BITUMEN ROOF SYSTEM OVER LWIC DECK. DECK IS STRUCTURALLY SLOPED EXCEPT @ ENTRANCE CANOPY.
⑥	LWIC CRICKET/SADDLE (SHADED) AT 1/2" : 1" SLOPE.
⑦	HVAC EQUIPMENT/EXHAUST FAN CURB - SEE DETAIL 2/A05.02.
⑧	6" W X 5" DP. GUTTER WITH 4" X 3" RECTANGULAR DOWNSPOUT. THE DOWNSPOUTS INTO UNDERGROUND STORMWATER COLLECTION SYSTEM ON WEST SIDE OF S.S. ROOF AND EMPTY ONTO SPLASHBLOCKS ON THE EAST SIDE OF S.S. ROOF - SEE DETAIL 1/A05.03.
⑨	OVERFLOW DRAIN - SEE DETAIL 6/A05.02.
⑩	ROOF DRAIN WITH 4-FT. SUMP - SEE DETAIL 5/A05.02.
⑪	ROOF HATCH WITH SPECIAL PAINT COATING AND INTEGRAL OSHA COMPLIANT SAFETY RAILING WITH SWING GATE - SEE DETAIL 3/A05.02.
⑫	PIPE PENETRATION - SEE DETAIL 4/A05.02.
⑬	SLEEPER/ROOF CURB (SIM.) - SEE DETAIL 5/A05.04.
⑭	SNOW GUARDS ON STANDING SEAM ROOF.
⑮	STANDING SEAM METAL ROOF SYSTEM.
⑯	RADON VENTS - SEE DETAIL 4/A05.02.
⑰	OVERFLOW SCUPPER - SEE SCHEDULE ON ENLARGED PLANS AND DETAILS 1-3/A05.04.



**1 ROOF PLAN- PARTIAL - AREA D**  
1/8" = 1'-0"



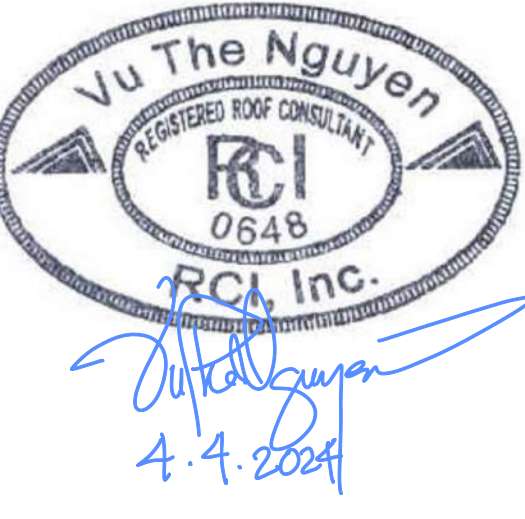
- ROOF PLAN GENERAL NOTES**
- SEE A01.03 FOR SHEET SPECIFIC GRAPHICS & SYMBOLS.
  - LOCATIONS AND SIZES OF MECHANICAL EQUIPMENT ARE APPROXIMATE. COORDINATE WITH STRUCTURAL, MECHANICAL PLANS AND EQUIPMENT SHOP DRAWINGS.
  - SEE PLUMBING DRAWINGS FOR VENT LOCATIONS.
  - SEE STRUCTURAL DRAWINGS FOR DESIGN LOAD REQUIREMENTS.
  - ALL LOW SLOPED ROOFS TO BE MINIMUM 1/4" PER FOOT. ALL ROOF DRAINS TO BE INSTALLED IN 4'-0" X 4'-0" - SLOPED SUMP, TYPICAL.
  - PROVIDE CRICKETS W/ 1/2" SLOPE AT UPSLOPE SIDE OF CURBS 24" WIDE OR GREATER, TYP.
  - SLOPE ALL COPINGS BACK TO ROOF.
  - WOOD BLOCKING SHOWN IN ROOF DETAILING SHALL BE FIRE TREATED. USE STAINLESS STEEL FASTENERS IN SPACING COMPLIANT W/ ANSI/SPIRI ES-1/FM 1-49 REQUIREMENTS.
  - EXTEND ALL PENETRATIONS, CURBS, AND COMPONENTS A MINIMUM OF 8" ABOVE THE FINISHED ROOF SURFACE. PROVIDE 12" CLEAR HORIZONTAL DISTANCE BETWEEN PENETRATIONS AND ANY VERTICAL SURFACE.
  - IF NOT DETAILED, APPLY MOST STRINGENT CONDITION OF NRCA AND SMACNA (CURRENT EDITIONS) STANDARDS FOR ROOF DETAIL CONDITIONS.
  - PROVIDE PRIMA FLASHINGS AT SMALL DIAMETER AND/OR SQUARE ROOF PENETRATIONS.



Wake County  
Public School  
System



434 FAYETTEVILLE STREET SUITE 1700  
RALEIGH, NORTH CAROLINA 27601  
TEL. 919.829.2700 FAX. 919.829.2730  
WWW.LS3P.COM



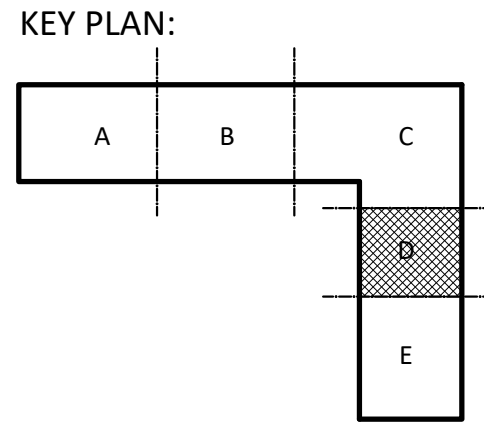
COPYRIGHT 2021. ALL RIGHTS RESERVED. PRINTED OR ELECTRONIC DRAWINGS AND DOCUMENTATION MAY NOT BE REPRODUCED IN ANY FORM WITHOUT WRITTEN PERMISSION FROM LS3P ASSOCIATES LTD.

**Swift Creek Elementary  
School**

5601 Tryon Rd Raleigh, NC 27606

LS3P PROJECT: 6201-207411

DATE	DESCRIPTION
10/17/2023	100%
4/10/2024	BID SET



**SHEET NAME:**  
ROOF PLAN- AREA D

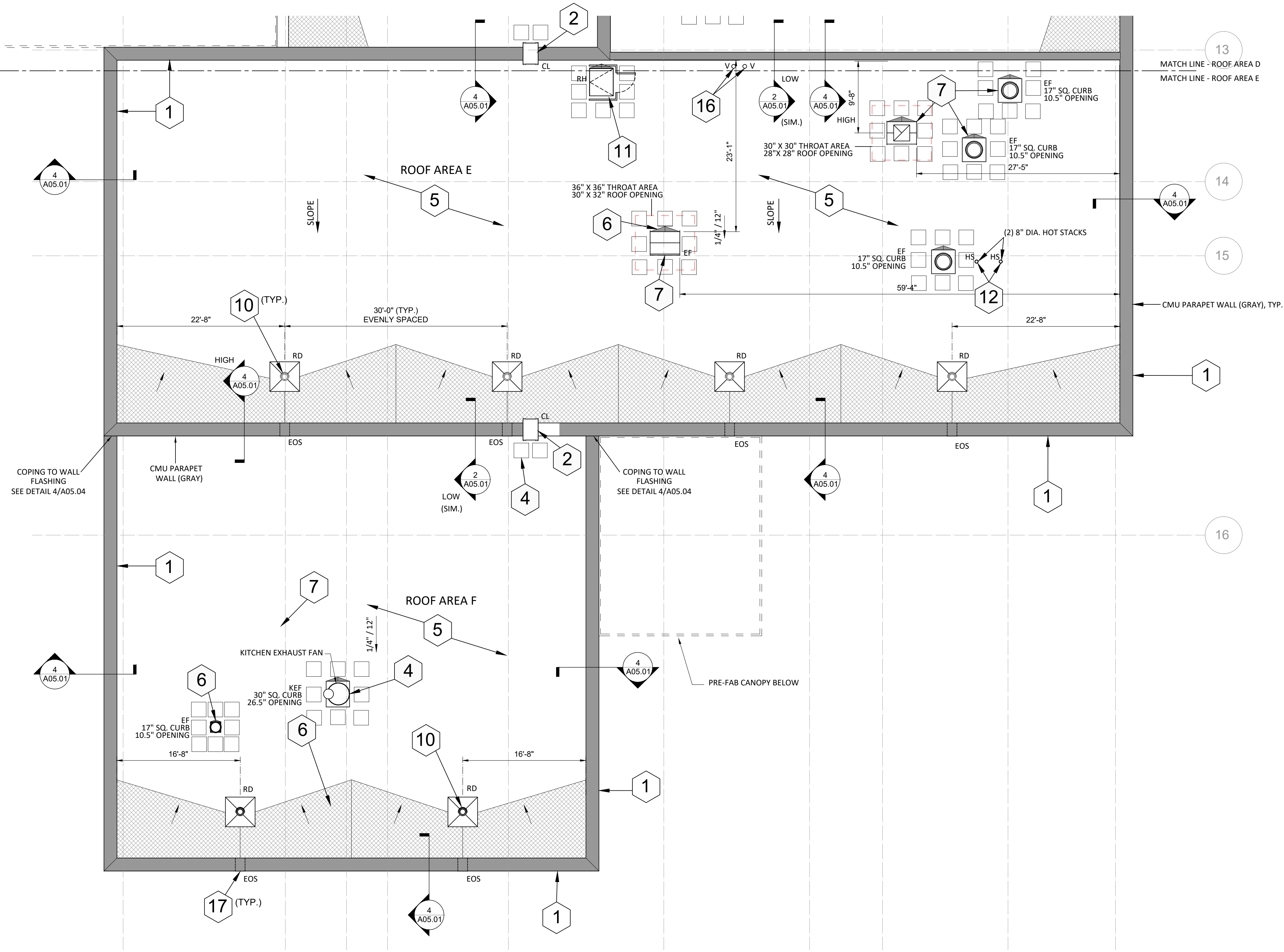
**BID SET SUBMISSION:** 2024.04.10

**SHEET:**  
**A01.03D**

BID SET

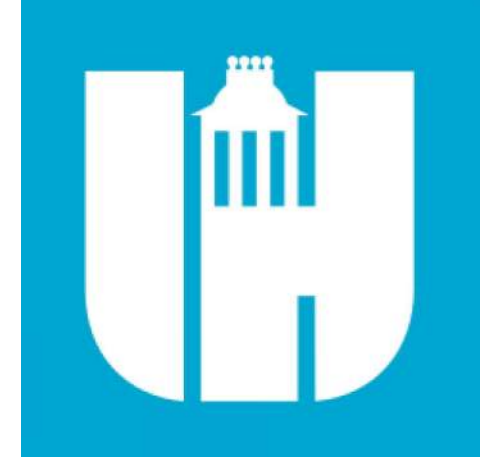
- 17 OVERFLOW SCUPPER SCHEDULE: (SEE DETAILS 1.2,3/A05.04)**
- 4" X 12" = NORTH AND SOUTH ROOF AREAS - UPPER A/B/C & LOWER WEST SIDE - ROOF AREA C.
  - 4" X 16" = LOWER ROOF AREA C, UPPER & LOWER ROOF AREA E.
  - 4" X 20" = ROOF AREA D.

ROOF PLAN KEYNOTES	
NUMBER	NOTE
①	PREFINISHED 0.050" ALUMINUM COPING - SEE DETAILS 4.5/A05.01.
②	WALL-MOUNTED ROOF ACCESS LADDER.
③	2" EXPANSION JOINT - SEE DETAILS 6.7/A05.04.
④	WALKWAY PADS.
⑤	MODIFIED BITUMEN ROOF SYSTEM OVER LWIC DECK. DECK IS STRUCTURALLY SLOPED EXCEPT @ ENTRANCE CANOPY.
⑥	LWIC CRICKET/SADDLE (SHADED) AT 1/2" SLOPE.
⑦	HVAC EQUIPMENT/EXHAUST FAN CURB - SEE DETAIL 2/A05.02.
⑧	6" W X 5" DP. GUTTER WITH 4" X 3" RECTANGULAR DOWNSPOUT. TIE DOWNSPOUTS INTO UNDERGROUND STORMWATER COLLECTION SYSTEM ON WEST SIDE OF S.S. ROOF AND EMPTY ONTO SPLASHBLOCKS ON THE EAST SIDE OF S.S. ROOF - SEE DETAIL 1/A05.03.
⑨	OVERFLOW DRAIN - SEE DETAIL 6/A05.02.
⑩	ROOF DRAIN WITH 4-FT. SUMP - SEE DETAIL 5/A05.02.
⑪	ROOF HATCH WITH SPECIAL PAINT COATING AND INTEGRAL OSHA COMPLIANT SAFETY RAILING WITH SWING GATE - SEE DETAIL 3/A05.02.
⑫	PIPE PENETRATION - SEE DETAIL 4/A05.02.
⑬	SLEEPER/ROOF CURB (SIM.) - SEE DETAIL 5/A05.04.
⑭	SNOW GUARDS ON STANDING SEAM ROOF.
⑮	STANDING SEAM METAL ROOF SYSTEM.
⑯	RADON VENTS - SEE DETAIL 4/A05.02.
⑰	OVERFLOW SCUPPER - SEE SCHEDULE ON ENLARGED PLANS AND DETAILS 1-3/A05.04.

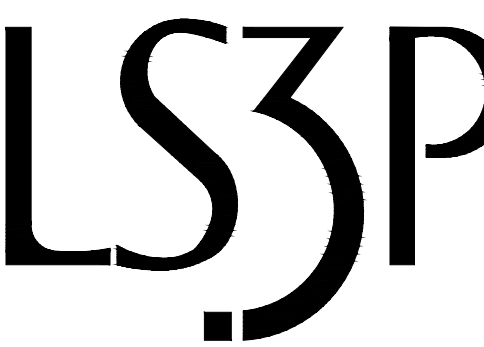


**1 ROOF PLAN- PARTIAL - AREA E**  
1/8" = 1'-0"

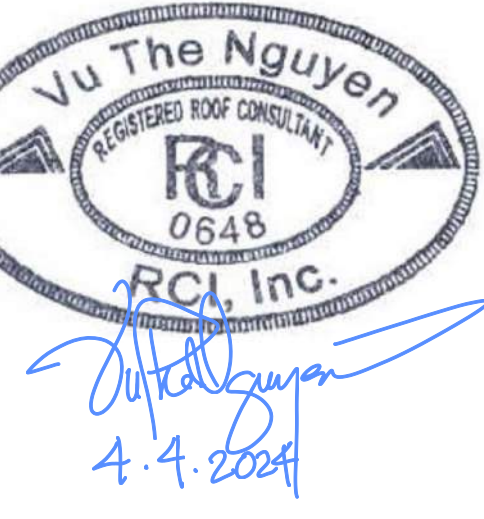
- ROOF PLAN GENERAL NOTES**
- SEE A01.03 FOR SHEET SPECIFIC GRAPHICS & SYMBOLS.
  - LOCATIONS AND SIZES OF MECHANICAL EQUIPMENT ARE APPROXIMATE. COORDINATE WITH STRUCTURAL, MECHANICAL PLANS AND EQUIPMENT SHOP DRAWINGS.
  - SEE PLUMBING DRAWINGS FOR VENT LOCATIONS.
  - SEE STRUCTURAL DRAWINGS FOR DESIGN LOAD REQUIREMENTS.
  - ALL LOW SLOPED ROOFS TO BE MINIMUM 1/4" PER FOOT. ALL ROOF DRAINS TO BE INSTALLED IN 4'-0" X 4'-0" - SLOPED SUMP. TYPICAL.
  - PROVIDE CRICKETS W/ 1/2" SLOPE AT UPSLOPE SIDE OF CURBS 24" WIDE OR GREATER. TYP.
  - SLOPE ALL COPINGS BACK TO ROOF.
  - WOOD BLOCKING SHOWN IN ROOF DETAILING SHALL BE FIRE TREATED. USE STAINLESS STEEL FASTENERS IN SPACING COMPLIANT W/ ANSI/SPIRI ES-1/FM 1-49 REQUIREMENTS.
  - EXTEND ALL PENETRATIONS, CURBS, AND COMPONENTS A MINIMUM OF 8" ABOVE THE FINISHED ROOF SURFACE. PROVIDE 12" CLEAR HORIZONTAL DISTANCE BETWEEN PENETRATIONS AND ANY VERTICAL SURFACE.
  - IF NOT DETAILED, APPLY MOST STRINGENT CONDITION OF NRCA AND SMACNA (CURRENT EDITIONS) STANDARDS FOR ROOF DETAIL CONDITIONS.
  - PROVIDE PRIMA FLASHINGS AT SMALL DIAMETER AND/OR SQUARE ROOF PENETRATIONS.



Wake County  
Public School  
System



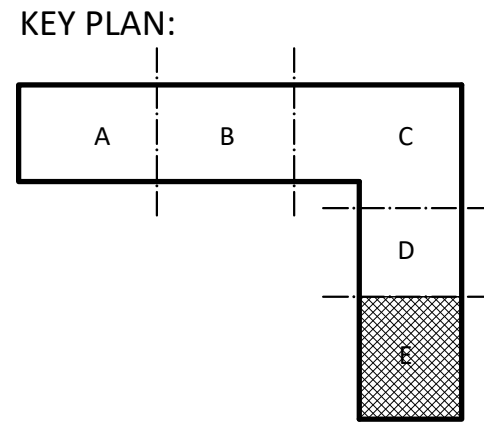
434 FAYETTEVILLE STREET SUITE 1700  
RALEIGH, NORTH CAROLINA 27601  
TEL. 919.829.2700 FAX. 919.829.2730  
WWW.LS3P.COM



COPYRIGHT 2021. ALL RIGHTS RESERVED. PRINTED OR ELECTRONIC DRAWINGS AND DOCUMENTATION MAY NOT BE REPRODUCED IN ANY FORM WITHOUT WRITTEN PERMISSION FROM LS3P ASSOCIATES LTD.

**Swift Creek Elementary School**  
5601 Tryon Rd Raleigh, NC 27606  
LS3P PROJECT: 6201-207411

DATE	DESCRIPTION
10/17/2023	100%
4/10/2024	BID SET



**SHEET NAME:**  
ROOF PLAN- AREA E

**BID SET SUBMISSION:** 2024.04.10

**SHEET:**  
**A01.03E**

BID SET

